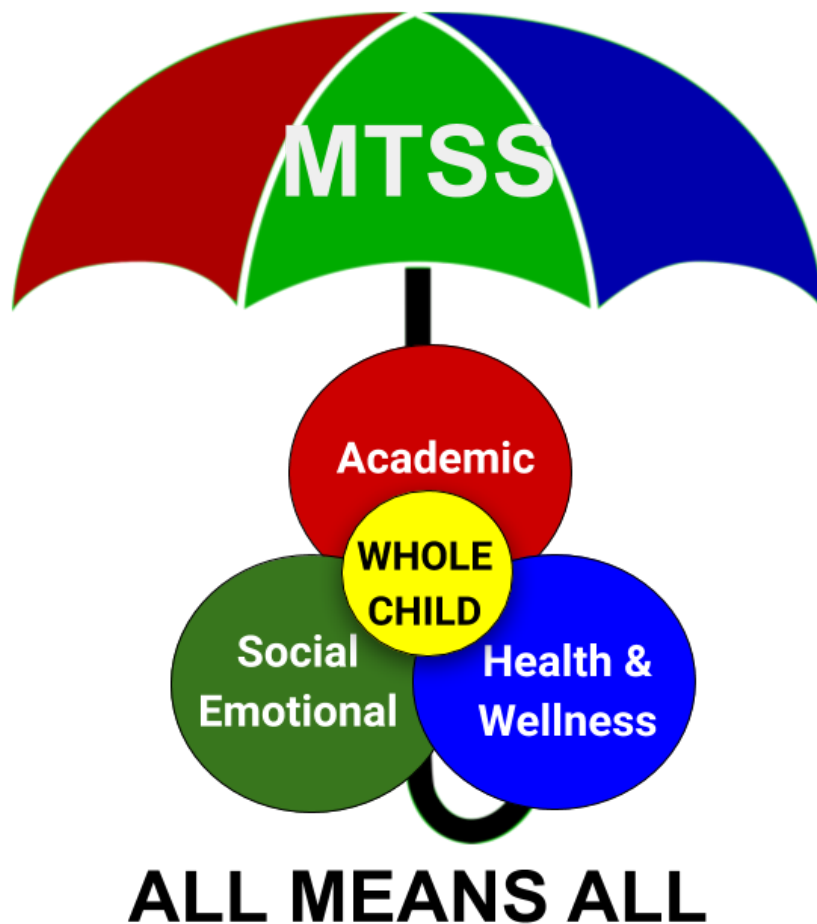


Vicksburg Community Schools Multi-Tiered System of Supports



Vicksburg Community Schools

Multi-Tiered System of Supports Implementation Summary

Introduction

The mission of Vicksburg Community Schools (VCS) is to maximize the success and potential of each student with a vision of all students graduating college and career ready. As a professional learning community, VCS is committed to: 1) ensuring that all students learn, 2) building and maintaining a collaborative culture, and 3) establishing a focus on results. VCS is also committed to utilizing a unified continuum of supports provided within the framework of a school-wide Multi-Tiered System of Supports (MTSS).

Definition

Vicksburg Community Schools has adopted the following definition of a Multi-Tiered System of Supports (MTSS) from the Michigan Department of Education: “A comprehensive framework comprised of a collection of research-based strategies designed to meet the individual needs and assets of the whole child at all achievement levels”. In short, an MTSS framework is designed to ensure that each and every student that walks into a classroom will have his or her individual needs met through high-quality instruction. MTSS intentionally interconnects the education, health, and human service systems in support of successful learners, schools, centers, and community outcomes. In addition, the integration of an MTSS framework within the Michigan Integrated Continuous Improvement Process is an essential component for improving academic achievement for all learners.

Outcomes

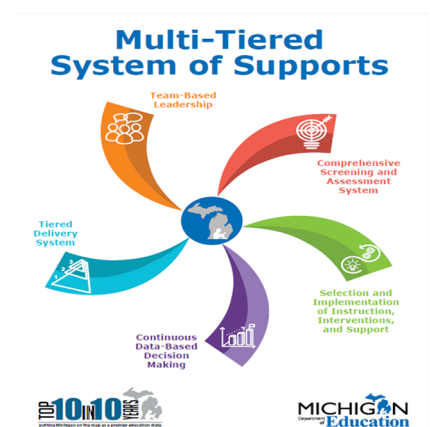
- ★ Supports that are designed to enable each and every learner to meet their learning potential
- ★ An education system that fosters family engagement and community partnerships
- ★ Supports that are available to ensure development of competent and effective staff/workforce
- ★ Sustainable and scalable structures that are created as host environments to support implementation of MTSS
- ★ An outcomes-driven approach with a meaningful evaluation component that indicates a commitment to continuous improvement
- ★ An efficient and effective system that informs the district improvement plan
- ★ Alignment across all levels of the education system (e.g., MDE, ISD, District, School, Classroom)

Essential Components

Five essential components of MTSS are interrelated and complementary:

- Team-Based Leadership
- Tiered Delivery System
- Selection and Implementation of Instruction, Interventions and Supports
- Comprehensive Screening & Assessment System
- Continuous Data-Based Decision Making

In order to be an effective and efficient system, all five elements must be present.



E. District Commitment

VCS is committed to ensuring that educators in our district deliver the Tier 1 core instructional program in the way it was designed. The expectation is that when the Tier 1 program is implemented with a high degree of integrity and by highly trained teachers, 80%-85% of the students receiving this instruction will show outcomes upon assessment that indicate a level of proficiency that meets minimal benchmarks for performance in the skill area. Tier 2 comprises targeted group interventions serving approximately 15% of the learners which they will receive in addition to the continuation of Tier 1. Learners will move fluidly between Tier 1 and Tier 2. Tier 3 interventions serve approximately 5% of the learners. Learners at this level receive intensive small group or individual interventions while continuing to receive Tier 1 instruction. Based on their performance, learners move fluidly between this Tier 1, 2, and 3. VCS is committed to ensuring that educators in our district receive sufficient and ongoing professional development to implement this framework.